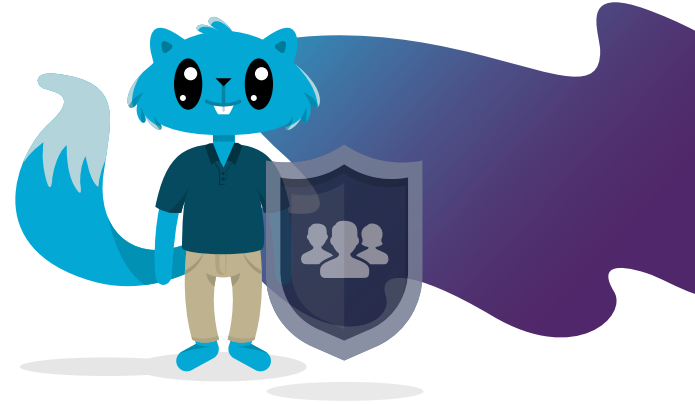




# Did you know that many Canadians, self-employed, contractual or retired, do not have access to group insurance?

When you reach the limit of coverage under the public plan, Medical Expense Insurance can provide you with peace of mind by covering certain expenses related to unexpected medical problems.



## An accident or illness can be expensive

When an accident or illness occurs, you may face unexpected costs that are not covered by your provincial health insurance plan. You may therefore have to assume the costs for:

- Ambulance transport
- Medical supplies
- Home care services
- Hospitalization costs
- Dental care
- Diagnostics and laboratory costs

## Quick and Easy Medical Expense Insurance



100% Web solution



Without medical exam



Issued instantly

In just a few minutes, a contract is automatically issued on the Web, without any medical test.



### COVERAGE



Up to \$40 per treatment with a health professional (physiotherapist, chiropractor...)



Unlimited compensation for ambulance transport.



Up to \$1,000 for diagnostic services and laboratory fees.



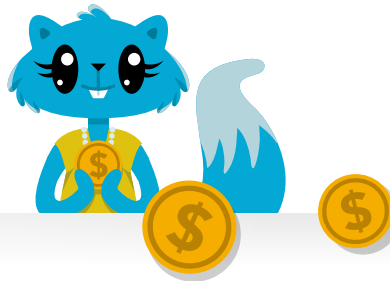
Up to \$1,000 for plaster casts, slings and hernia belts.



Up to \$500 for hearing aids.



Up to \$500 for dental care following an accident (per tooth).



**+** For the life of the contract, the covered medical expenses cannot exceed \$10,000.

### Two options are available:



Accident only



Accident and Illness

Get protected today:

Matthew Laker  
matthew@matthewlaker.com  
705-430-4643